



# TurboTools™ - More Than Ever!

Step into the Future – New Generation Automation Software for Hardware Electrical Systems design!

## System CAD – Closing the Gap between MCAD and ECAD

TurboTools™ Corporation is a leading innovator of Electronic Design Automation (EDA) enterprise software applications. We are the first company in the industry to offer the next generation engineering automation solutions that extend beyond the capabilities of traditional Computer Aided Design (CAD) tools. Bridging the gap between Mechanical CAD (MCAD) and Electrical CAD (ECAD) tools, TurboTools' solutions define a new market segment for EDA tools called System CAD or SCAD.

TurboTools views SCAD as an entirely new methodology of managing all design and manufacturing activities during the system integration. SCAD functionalities will not only bridge the gap between mechanics and electronics, but will also manage both disciplines under one umbrella, leading the entire design process of electro-mechanical equipment.

Our first SCAD patented technology product, CableEquity™, offers cable and harness component interconnect design automation software for companies designing and manufacturing mechatronic systems or any kind of electromechanical equipment, including highly integrated electronic equipment, high-tech instrumentation, automotive, aircrafts, ships, power plants, oil drilling platforms, etc. Cost effective and intuitive, CableEquity addresses current challenges for designers and manufacturers of hardware electrical systems.

## Speed Up Time-to-Market – with CableEquity™

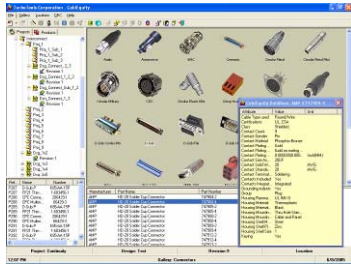
CableEquity introduces software innovation into every step of Hardware Electrical Systems design process. TurboTools' solutions will save you time and money by eliminating errors, automating routine tasks, and integrating with existing tools. All of this will accelerate your product delivery to market".



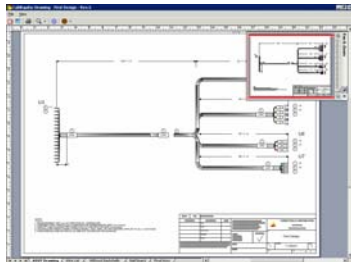
Design Task	Current Process	With CableEquity™
Collect signal requirements	Manual, error-prone process	Automatic import from common ECAD tools
Select Components	Exhaustive search through catalogs	Parametric search and cross-reference engine, interactive design workflow
Documents and Output	Manual drafting and compilation	Automatic generation of all documentation; export to common MCAD tools
Test, simulate, and validate	Manual, post-production test-and-try	Automatic, at design stage
<b>Total time / cost</b>	<b>3 persons, over 28 men-hours or \$700+*</b>	<b>1 person, 15 minutes or only \$8*</b>

\* TurboTools research

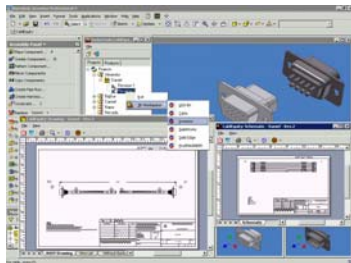
## CableEquity™ Features at a Glance



Components Gallery



Automated Drafting



Export to CAD tools

### Mechanical

Complete mechanical editor  
Complete 2D & 3D libraries with full design automation

### Electrical

Eliminates design Errors  
Automates many operations, retains full flexibility  
Interactive step-by-step design workflow

### System

Error-FREE environment with full system simulation and validation during design phase  
Integrates with ECAD and MCAD tools and PLM systems

### Advanced Workbench Environment

The intuitive Graphical User Interface guides engineers through the design process enforcing design completeness

### SMART Dynamic Translator

Translate data from all major Schematic Capture and PCB layout tools, eliminating manual input

### Support of CAD tools

Transfer seamlessly design data to 3D CADs: IronCAD, SolidWorks, Inventor, Pro/E, Catia, UGS, Solid Edge

### Dual starting point “Design - Interconnect”

Design entire hardware electrical system before cable and harness interconnect assemblies are designed

### Automatic post processing

Automatic generation all final drawings, schematics and bills of materials in a matter of seconds

### APLI – interconnection diagrams

Automatic physical and logical interconnect diagrams design for any assembly, sub-assembly, system or sub-system level in a real-time

### System-wide Connectivity Tracking

Track all signals across entire system and check for signals compatibility

### CSSC – Schematic Capture

Allows design control system schematics using drag-and-drop technology

### Parametric Database

More than 7,000 searchable and RoHS compliant components from over 30 manufacturers

### Parametric, Cross-Reference Search Engine

Search thousands of electrical and interconnect components, and accessories

### Design Rules Check (DRC)

Real-time designs and components validation using customized build-in DRC

### Previous Designs Re-use

Use old diagrams or BOMs, convert drawings, locate replaced compatible components

### Automatic Revisions Control

Access all designs and their revisions at any time during design process to leverage related design data, simplify information and integrity

### Universal Electronic Output

Output in DXF and PDF formats for ultimate flexibility and integration

To optimize operational efficiency and minimize development costs, electronic and technology companies need to automate key business processes associated with their products lifecycle. An integrated design environment, or SCAD, is guaranteed to accelerate new product introduction, improve product margins, and integrate complex supply chain.



TurboTools™ Corporation  
2190 31<sup>st</sup> Avenue, San Francisco  
CA, 94116-1637 USA  
1.415.759.5599  
<http://www.turbotools.com>